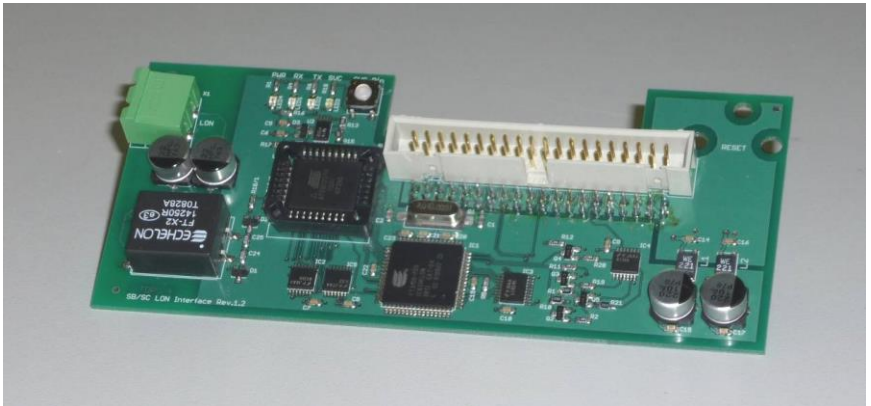


SMARTCONTROL | ECS

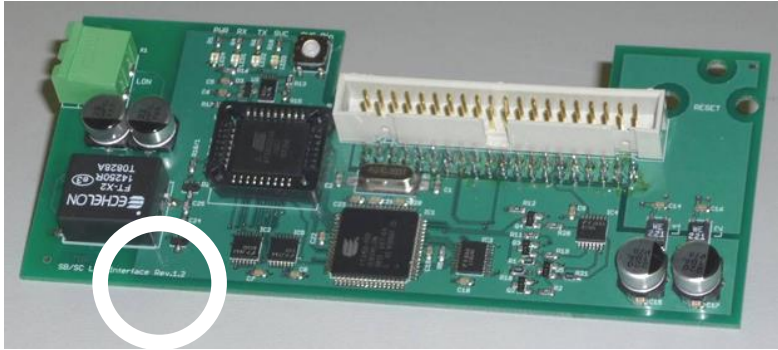
Energy Management System

Installation of the LON Expansion Set

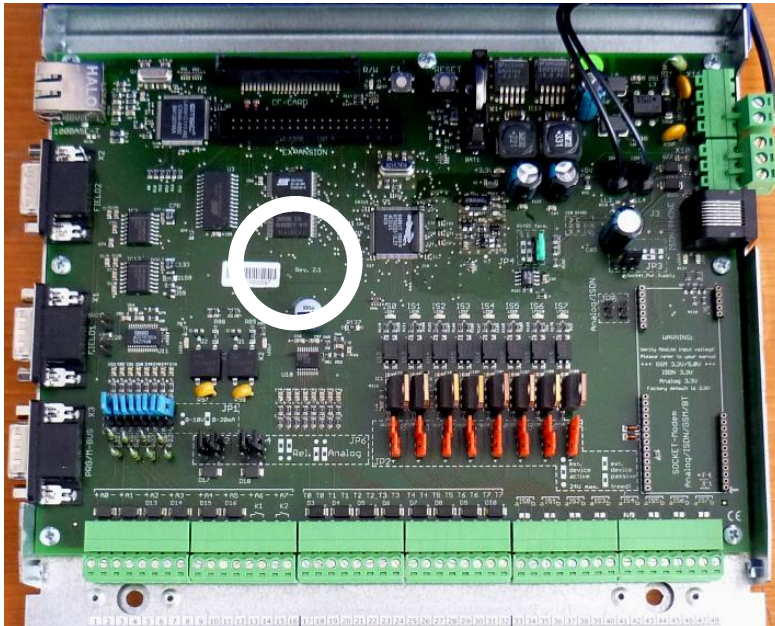
3-349-594-03
3/5.19

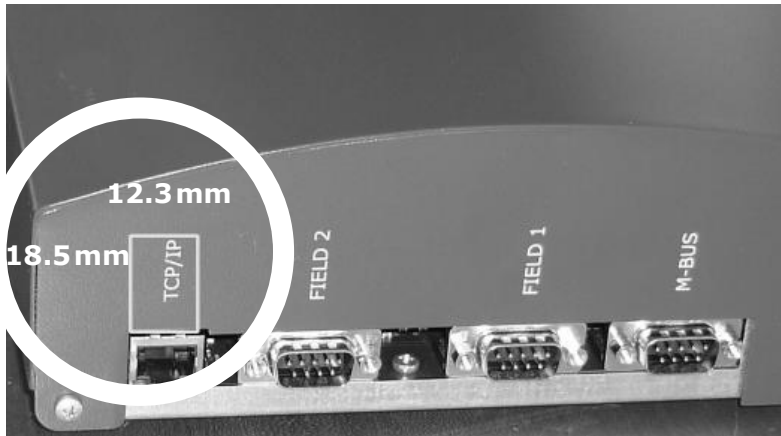


1 Prerequisites



The LON expansion set can only be installed if a basic PCB from revision level 2.3x onwards is available, see encircled marking in the picture below.





A opening is required in the housing cover of the SMARTCONTROL standard model for connecting the LON plug. Perforations have already been provided for penetration in the housing of models from version 2 onwards.

If no perforations have been provided, an opening of 18.5 x 12.3 mm must be sawn out of the material. It is imperative that you screw off the housing cover to avoid damaging the basic PCB.

2 Installation

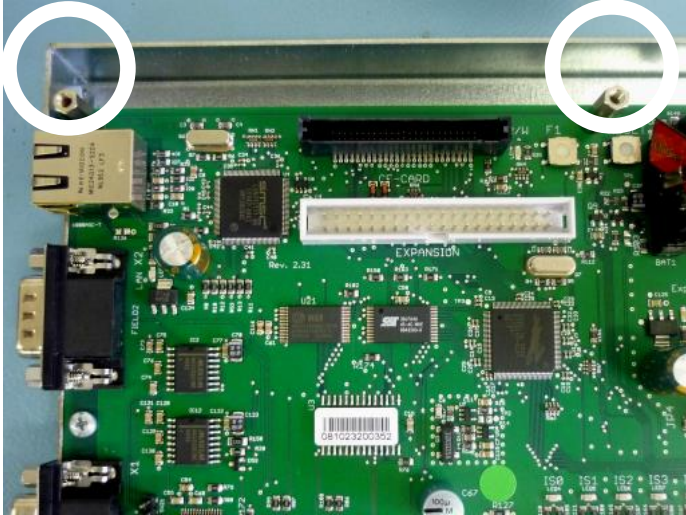
The installation accessories which come with the standard equipment consist of two 18 mm hexagonal distance sleeves.



- Disconnect the SMARTCONTROL from the mains system.
- Ground persons and tools before starting the installation work.
- Remove the top two M3 screws and replace them by the two distance sleeves.



- Insert the LON PCB into the centre of the expansion slot. Please insert with caution and make sure that all the pins make contact with the appropriate jacks.



- Fix the LON expansion PCB afterwards with the two M3 screws.



The connection of the LON bus and further configuration with the software SMARTCONTROL manager is described in the operating instructions (3-349-553-03), which you can find on our Homepage.

3 Repair and Replacement Parts Service, Calibration Center and Rental Instrument Service

If required please contact:

GMC-I Service GmbH
Service-Center
Beuthener Str. 41
90471 Nuremberg, Germany
Phone: +49 911 817718-0
Fax: +49 911 817718-253
e-mail: service@gossenmetrawatt.com
www.gmci-service.com

This address is only valid in Germany. Please contact our representatives or subsidiaries for service in other countries.

4 Product Support Industry

If required please contact:

GMC-I Messtechnik GmbH
Product Support Hotline Industry
Phone: +49 911 8602-500
Fax: +49 911 8602-340
e-mail : support.industrie@gossenmetrawatt.com

Edited in Germany • Subject to change without notice • A pdf version is available on the internet