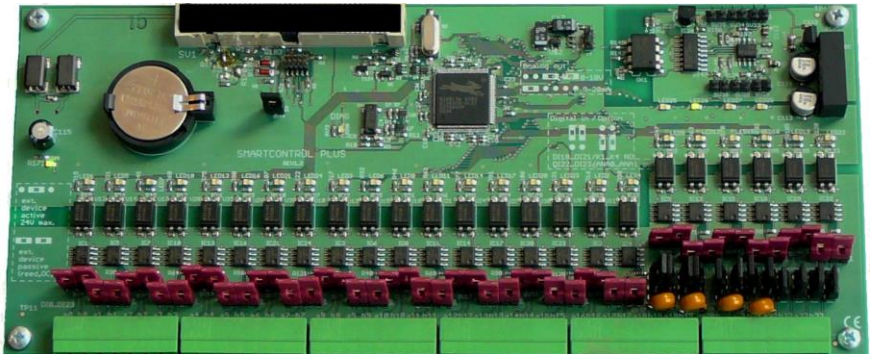


SMARTCONTROL | ECS

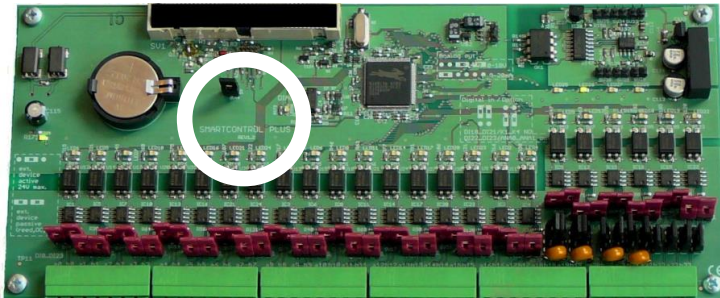
Energy Management System

Installation of I/O24 Expansion Module

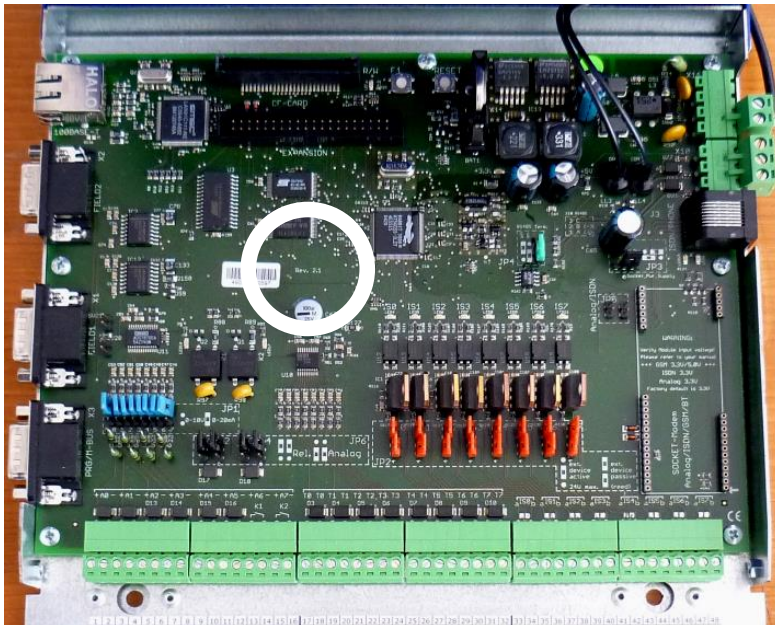
3-349-595-03
3/5.19



1. Prerequisites



The I/O24 expansion set can only be installed if a basic PCB from revision level 2.3x onwards is available, see encircled marking in the picture below.

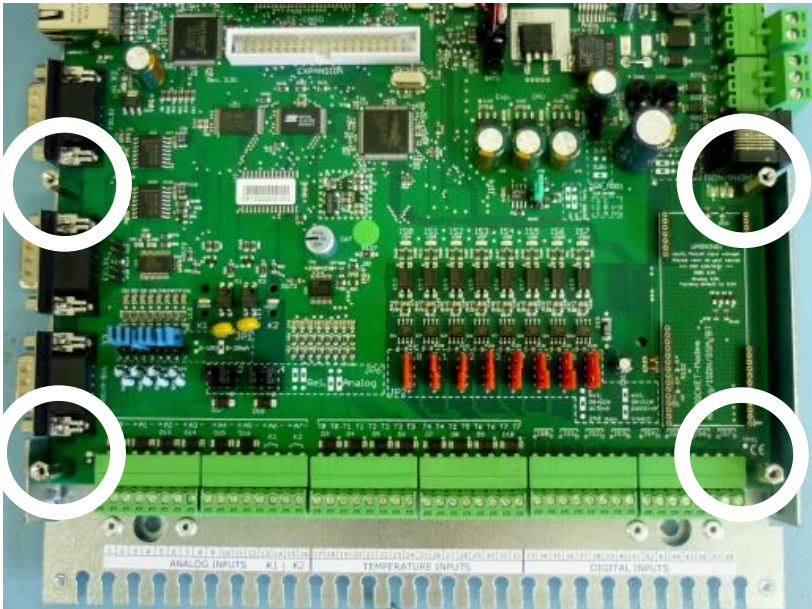


2. Installation

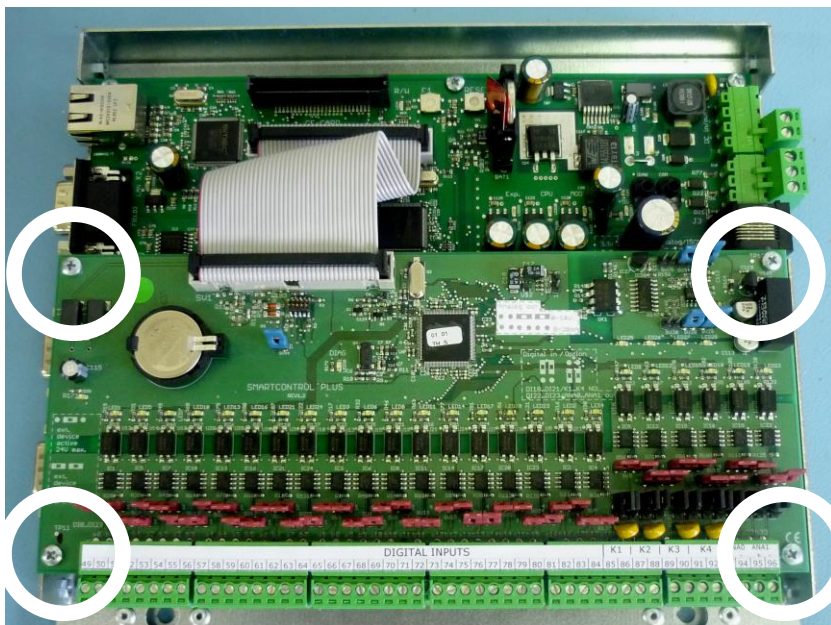
The installation accessories which come with the standard equipment consist of four 20 mm hexagonal distance sleeves and a 10 cm flat ribbon cable.



- Disconnect the SMARTCONTROL from the mains system.
- Ground persons and tools before starting the installation work.
- Remove the bottom four M3 screws and replace them by the four distance sleeves.



- Place the I/O24 interface onto the distance sleeves and establish a screw connection with the four M3 screws.
- Connect the expansion slots with the flat ribbon cable.



The connection of the input/output terminals and further configuration with the Software SMARTCONTROL Manager is described in the operating instructions (3-349-552-03), which you can find on our Homepage.

3 Repair and Replacement Parts Service, Calibration Center and Rental Instrument Service

If required please contact:

GMC-I Service GmbH
Service-Center
Beuthener Str. 41
90471 Nuremberg, Germany
Phone: +49 911 817718-0
Fax: +49 911 817718-253
e-mail: service@gossenmetrawatt.com
www.gmci-service.com


This address is only valid in Germany. Please contact our representatives or subsidiaries for service in other countries.

4 Product Support Industry

If required please contact:

GMC-I Messtechnik GmbH
Product Support Hotline Industry
Phone: +49 911 8602-500
Fax: +49 911 8602-340
e-mail: support.industrie@gossenmetrawatt.com

Edited in Germany • Subject to change without notice • A pdf version is available on the internet

 **GOSSEN METRAWATT**
GMC-I Messtechnik GmbH
Südwestpark 15
90449 Nürnberg • Germany

Phone+49 911 8602-111
Fax +49 911 8602-777
E-Mail info@gossenmetrawatt.com
www.gossenmetrawatt.com