

# GMC-I Driver Control

## Software for the Installation of Device Drivers for Devices and Adapters of GOSSEN METRAWATT

3-349-614-03  
9/6.21



**1 Information on Application ..... 2**

**2 System Requirements ..... 2**

2.1 Hardware .....2

2.2 Operating System .....2

2.3 Supported Devices .....2

**3 Installation ..... 3**

3.1 Driver Installation on your PC .....3

3.2 Initial Hardware Startup .....4

**4 Safety Messages during Driver Installation on Windows 7 ...5**

**5 Product Support ..... 5**

**2 System Requirements**

Prerequisites for you PC with regard to hardware and operating system are listed in concrete terms in the following subsections.

**2.1 Hardware**

- Processor and RAM see minimum system requirements of the respective operating system
- VGA monitor with a resolution of at least 1024 x 768 pixels
- Hard disk with at least 10 MB available memory capacity
- Mouse and keyboard
- One or more USB ports

**2.2 Operating System**

- Windows 7, 8 or 10

**2.3 Supported Devices**

GMC-I Driver Control as from version 1.21 supports the following devices:

**Adapters and Modules for Test Instruments and Controllers**

- IrDa-USB Converter for test instruments with a serial port  
*(e. g. for PROFITEST 0100SII / C, METRISO C and GEOHM C)*
- RS232-USB R2500/R2700
- SECUSTORE
- SECUTEST SI+

**Testers**

- SECULIFE ST BASE(25)
- SECULIFE ST PRO
- SECUTEST BASE(10)
- SECUTEST PRO
- MINITEST 3P MASTER
- MINITEST MASTER
- MINITEST PRO
- PROFITEST PRIME (AC)
- PROFITEST MASTER (IQ)
- SECULIFE SR
- METRISO XTRA (G1000+)

**Multimeter**

- METRAport 40 USB
- USB-METRAHIT 2x
- USB-METRAHIT X-TRA

**Laboratory Power Supplies**

- SYSKON P500
- SYSKON P800
- SYSKON P1500
- SYSKON P3000
- SYSKON P4500

These operating instructions describe the program GMC-I Driver Control as from version 1.21.

**1 Information on Application**

All of the steps necessary for setting up USB drivers for instruments of Gossen Metrawatt GmbH, are described in this document.

The system requirements are listed in the following chapter.

The installation of the device drivers is described under section 3 for Windows 7 and subsequent versions.

**Install GMC-I Driver Control**



**Set up Device Drivers**

(automatic during initial startup after connecting the device with the USB interface of the PC)



**Connect the Test Instrument**



**Exchange Data**

e. g. IZYTRONIQ

### 3 Installation

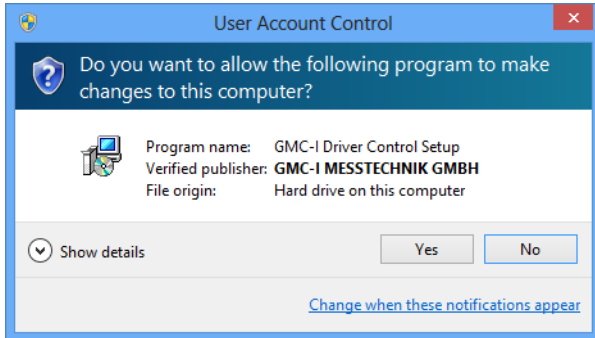
GMC-I Driver Control software can be downloaded from Gossen Metrawatt's website at:

www.gossenmetrawatt.com  
(→ Products → Software → Software for Testers  
→ Utilities → **Driver Control**)

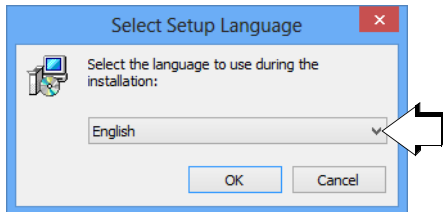
The ZIP file can be unpacked in any desired directory. The setup file then appears in the directory. Installation is started by double clicking the setup file. A wizard guides you through the installation procedure.

The installation routine is described in the following using Windows 8 as an example.

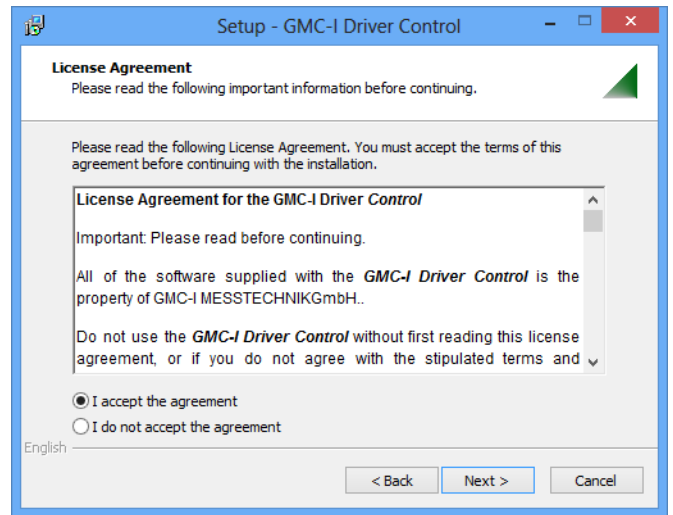
#### 3.1 Driver Installation on your PC



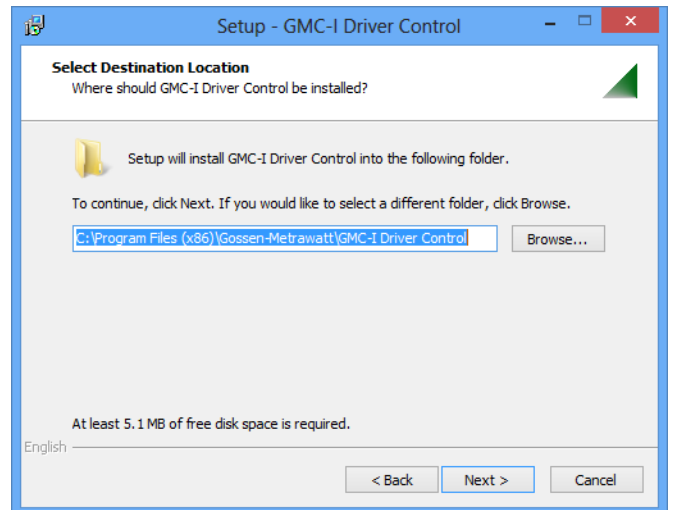
⇒ Accept and click the „Next“ button.



⇒ First select the desired language and acknowledge by clicking the „OK“ button.



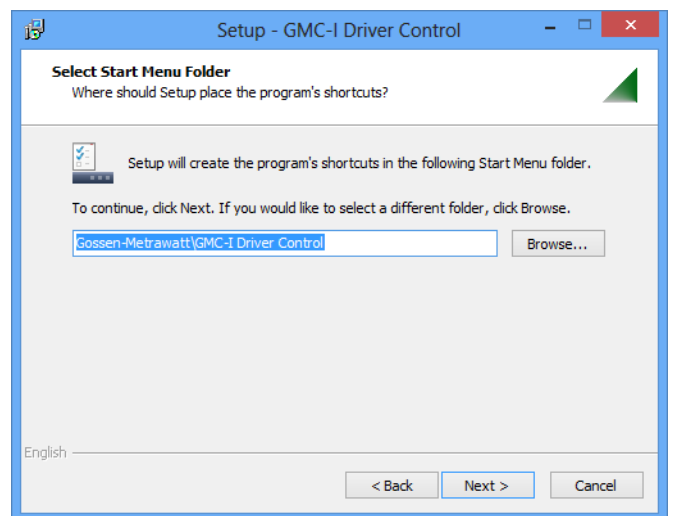
⇒ Read the agreement.  
⇒ If you accept, click the „Next“ button.



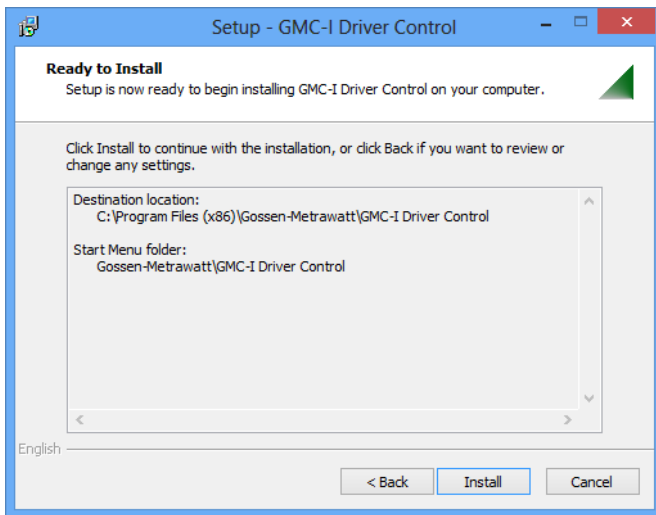
⇒ Then click the „Next“ button.



⇒ Then click the „Next“ button.



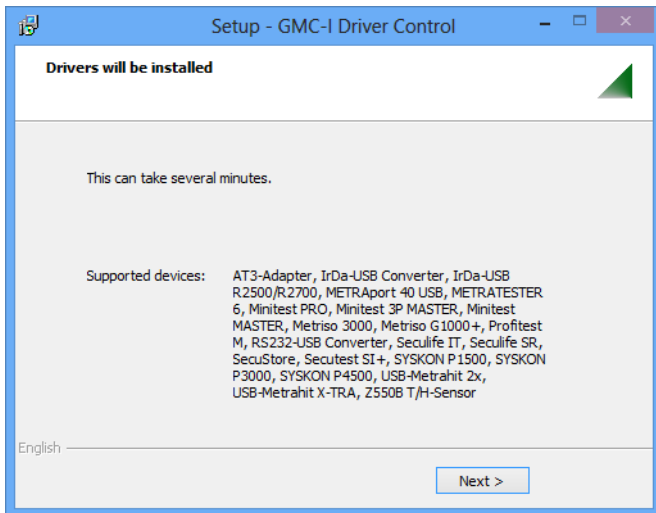
⇒ Then click the „Next“ button.



➤ Then click the „Install“ button



➤ Click the „Finish“ button.

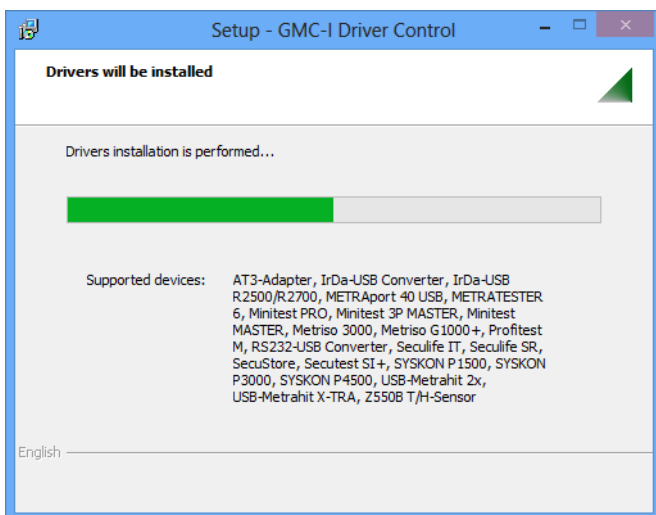


➤ The drivers will be installed, as soon as you click the „Next“ button.

### 3.2 Initial Hardware Startup



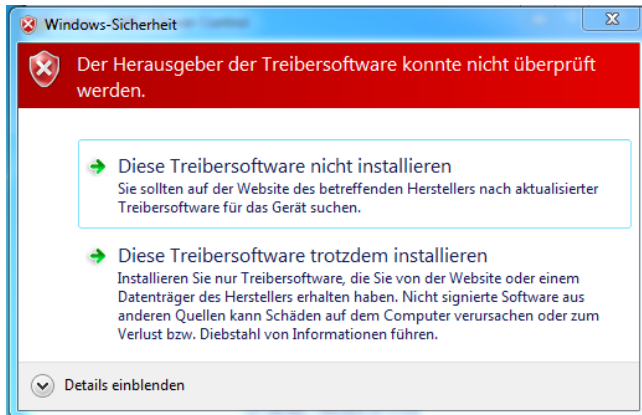
As soon as you connect a supporting device with the USB interface of your PC, the installation of the matching device driver is launched.



The progress bargraph is shown.

## 4 Safety Messages during Driver Installation on Windows 7

Problems may occur during the installation of GMC-I Driver Control 1.21 on the Windows 7 operating system. Four Windows safety warnings may pop up successively, informing the user that the issuer of the driver software cannot be verified.



The message shown above can be ignored by selecting the option „Install this driver software anyway“. Proceed in this manner for each of the four messages. This is the only way to ensure the complete and fully functional installation of all drivers.

## 5 Product Support

If required please contact:

Gossen Metrawatt GmbH  
**Product Support Hotline**  
Phone +49 911 8602-0  
Fax +49 911 8602-709  
e-mail: support@gossenmetrawatt.com

Copyright © 2019 Gossen Metrawatt GmbH

Duplication and/or forwarding of this document to third parties, as well as the use or transmission of its contents, are prohibited without prior express consent. Violators are liable for compensation of damages. All rights are reserved in the event of a patent grant or the registration of a utility model.

---

Edited in Germany • Subject to change without notice • PDF version available on the Internet

 **GOSSEN METRAWATT**

Gossen Metrawatt GmbH  
Südwestpark 15  
90449 Nürnberg • Germany

Phone: +49 911 8602-111  
Fax: +49 911 8602-777  
e-mail: [info@gossenmetrawatt.com](mailto:info@gossenmetrawatt.com)  
[www.gossenmetrawatt.com](http://www.gossenmetrawatt.com)